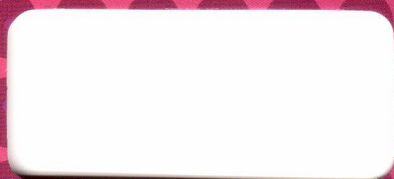




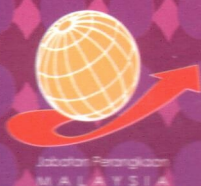
MALAYSIA

**PENUNJUK EKONOMI MALAYSIA  
INDEKS PELOPOR, SERENTAK & SUSULAN**

*MALAYSIAN ECONOMIC INDICATORS  
LEADING, COINCIDENT & LAGGING INDEXES*



**2012**



JABATAN PERANGKAAN MALAYSIA  
DEPARTMENT OF STATISTICS, MALAYSIA



# **PENUNJUK EKONOMI MALAYSIA**

**INDEKS PELOPOR, SERENTAK & SUSULAN**

---

## ***MALAYSIAN ECONOMIC INDICATORS***

***LEADING, COINCIDENT & LAGGING INDEXES***

**OGOS**  
***AUGUST***

**2012**

**JABATAN PERANGKAAN MALAYSIA**  
***DEPARTMENT OF STATISTICS, MALAYSIA***



# Penunjuk Ekonomi Malaysia

## Indeks Pelopor, Serentak & Susulan

O G O S  
A U G U S T 2 0 1 2

### *Malaysian Economic Indicators*

#### *Leading, Coincident & Lagging Indexes*

## Intisari

Indeks Pelopor (IP) yang memantau prestasi ekonomi ke hadapan kekal pada 112.7 mata pada bulan Ogos 2012 selepas meningkat sedikit pada bulan sebelumnya. Penurunan tiga komponen IP diimbangi oleh peningkatan dua komponen lain iaitu Jangkaan Nilai Jualan di Sektor Pembuatan (0.3%) dan Indeks Perusahaan Bursa Malaysia (0.2%). Walau bagaimanapun, perubahan tahunan IP pada Ogos 2012 menurun sedikit kepada 2.0% daripada 2.3% pada bulan sebelumnya.

Indeks Serentak (IS), yang mengukur aktiviti ekonomi semasa menurun sebanyak 0.2% pada Ogos 2012. Komponen utama yang menyumbang kepada penurunan ialah Jumlah Guna Tenaga di Sektor Pembuatan, Nilai Caruman Benar kepada KWSP

## Highlights

*The Leading Index (LI) which monitors the economic performance in advance remained at 112.7 points in August 2012 after a slight increase in the previous month. The decreased of three components of LI were offset by the increased in other two components namely Expected Sales Value in Manufacturing Sector (0.3%) and Bursa Malaysia Industrial Index (0.2%). On the other hand, the annual change of the LI in August 2012 dropped slightly to 2.0% from 2.3% in the preceding month.*

*The Coincident Index (CI), which measures the current economic activity declined by 0.2% in August 2012. The main components that contributed to the decrease were Total Employment in Manufacturing Sector, Real Contributions to EPF*

dan Indeks Kuantiti Perdagangan Runcit, masing-masing mencatatkan negatif 0.1%. Manakala, pertumbuhan tahunan IS meningkat kepada 1.6% pada Ogos 2012 berbanding 0.2% pada bulan lepas.

Perubahan tahunan bagi IS menunjukkan peningkatan pada Ogos 2012. Sebaliknya, indeks Difusi bagi kedua-dua indeks berada di bawah paras 50.0% buat pertama kali pada 2012. Walau bagaimanapun, IP kekal melebihi arah aliran jangka panjang seperti dalam carta 2A. Senario ini membayangkan bahawa ekonomi Malaysia akan terus berkembang dengan kadar perlahan pada bulan-bulan akan datang.

*and Volume Index of Retail Trade, which respectively recorded a negative of 0.1%. Meanwhile, the annual change of the CI picked up to 1.6% in August 2012 as against 0.2% in the last month.*

*The annual change of the CI showed an improvement in August 2012. Conversely, the level of Diffusion Index for both indexes showed below 50.0% for the first time in 2012. However, the LI remains above its long term trend as shown in chart 2A. This scenario implies that the Malaysian economy is likely to continue expanding at slower pace in the coming months.*

**Jadual 1: Sumbangan Setiap Komponen terhadap Perubahan Peratusan Indeks Pelopor daripada Bulan Sebelumnya**  
 Table 1: Contribution of Each Component to the Percentage Change in the Leading Index from the Previous Month

| <b>Komponen Indeks Pelopor</b><br><i>Leading Index Components</i>   | <b>Jun 2012</b><br><i>June 2012</i> | <b>Julai 2012</b><br><i>July 2012</i> | <b>Ogos 2012</b><br><i>August 2012</i> |
|---|-------------------------------------|---------------------------------------|--|
| 1. Penawaran Wang Benar, M1<br><i>Real Money Supply, M1</i>   | 0.1                                 | 0.1                                   | 0.0                                    |
| 2. Indeks Perusahaan Bursa Malaysia<br><i>Bursa Malaysia Industrial Index</i>   | 0.1                                 | 0.0                                   | 0.2                                    |
| 3. Import Benar Semi Konduktor<br><i>Real Imports of Semi Conductors</i>  | -0.1                                | 0.1                                   | -0.1                                   |
| 4. Import Benar Logam Asas Berharga dan Logam Bukan Ferus Lain<br><i>Real Imports of Other Basic Precious and Other Non-ferrous Metal</i> | 0.0                                 | -0.1                                  | -0.2                                   |
| 5. Bilangan Unit Kediaman yang Diluluskan Pembinaan<br><i>Number of Housing Units Approved</i>  | -0.3                                | 0.3                                   | 0.0                                    |
| 6. Jangkaan Nilai Jualan, Pembuatan<br><i>Expected Sales Value, Manufacturing</i>   | 0.3                                 | -0.2                                  | 0.3                                    |
| 7. Bilangan Syarikat Baru Didaftar<br><i>Number of New Companies Registered</i>   | -0.2                                | 0.0                                   | -0.2                                   |
| <b>Perubahan Peratusan</b><br><i>Percentage Change</i>  | -0.1                                | 0.2                                   | 0.0                                    |

**Jadual 2: Sumbangan Setiap Komponen terhadap Perubahan Peratusan Indeks Serentak daripada Bulan Sebelumnya**  
 Table 2: Contribution of Each Component to the Percentage Change in the Coincident Index from the Previous Month

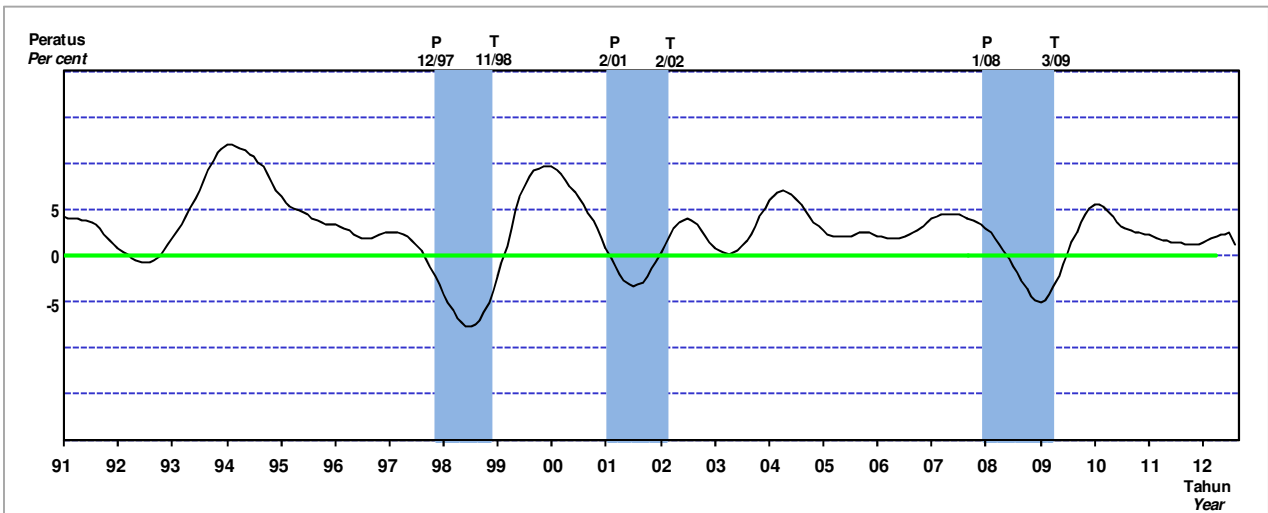
| <b>Komponen Indeks Serentak</b><br><i>Coincident Index Components</i>              | <b>Jun 2012</b><br><i>June 2012</i> | <b>Julai 2012</b><br><i>July 2012</i> | <b>Ogos 2012</b><br><i>August 2012</i> |
|--|-------------------------------------|---------------------------------------|--|
| 1. Jumlah Guna Tenaga, Pembuatan<br><i>Total Employment, Manufacturing</i>         | -0.1                                | -0.1                                  | -0.1                                   |
| 2. Gaji & Upah Benar, Pembuatan<br><i>Real Salaries &amp; Wages, Manufacturing</i> | -0.2                                | -0.2                                  | 0.0                                    |
| 3. Indeks Pengeluaran Perindustrian<br><i>Industrial Production Index</i>          | -0.2                                | -0.1                                  | 0.0                                    |
| 4. Nilai Caruman Benar, KWSP<br><i>Real Contributions, EPF</i>                     | -0.4                                | 0.2                                   | -0.1                                   |
| 5. Kapasiti Penggunaan, Pembuatan<br><i>Capacity Utilisation, Manufacturing</i>    | -0.1                                | -0.3                                  | 0.1                                    |
| 6. Indeks Kuantiti Perdagangan Runcit<br><i>Volume Index of Retail Trade</i>       | 0.2                                 | 0.1                                   | -0.1                                   |
| <b>Perubahan Peratusan</b><br><i>Percentage Change</i>                             | -0.8                                | -0.4                                  | -0.2                                   |

**Jadual 3: Sumbangan Setiap Komponen terhadap Perubahan Peratusan Indeks Susulan daripada Bulan Sebelumnya**  
 Table 3: Contribution of Each Component to the Percentage Change in the Lagging Index from the Previous Month

| <b>Komponen Indeks Susulan</b><br><i>Lagging Index Components</i>                             | <b>Jun 2012</b><br><i>June 2012</i> | <b>Julai 2012</b><br><i>July 2012</i> | <b>Ogos 2012</b><br><i>August 2012</i> |
|---|-------------------------------------|---------------------------------------|--|
| 1. Kos Seunit Buruh, Pembuatan<br><i>Unit Labour Cost, Manufacturing</i>                      | -0.2                                | 0.0                                   | 0.2                                    |
| 2. Bilangan Projek Pelaburan Baru Diluluskan<br><i>Number of Investment Projects Approved</i> | 0.1                                 | -0.3                                  | 0.4                                    |
| 3. Bilangan Kenderaan Baru Didaftar<br><i>Number of New Vehicles Registered</i>               | -0.3                                | 0.1                                   | -0.1                                   |
| 4. Eksport Gas Asli & Minyak Mentah<br><i>Exports of Natural Gas &amp; Crude Oil</i>          | 0.1                                 | -0.8                                  | 0.6                                    |
| 5. IHP Perkhidmatan<br><i>CPI for Services</i>  | 0.0                                 | 0.0                                   | 0.2                                    |
| <b>Perubahan Peratusan</b><br><i>Percentage Change</i>  | -0.3                                | -1.0                                  | 1.3                                    |

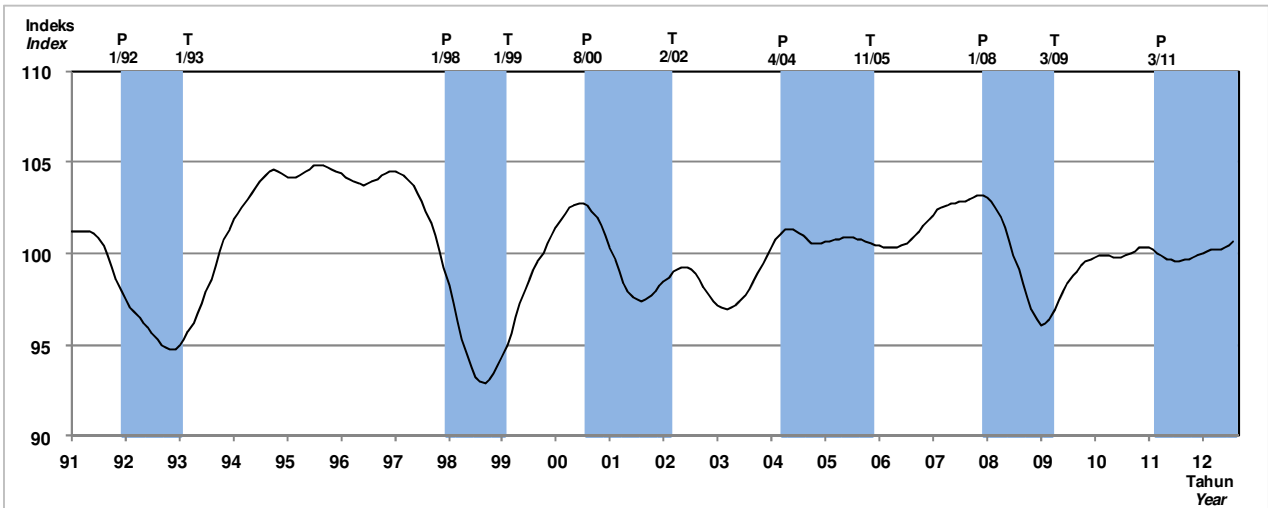
**Carta 1: Kadar Pertumbuhan bagi Indeks Pelopor (Terlicin) dan Kitaran Perniagaan**

*Chart 1: Growth Rate of Leading Index (Smoothed) and Business Cycle*



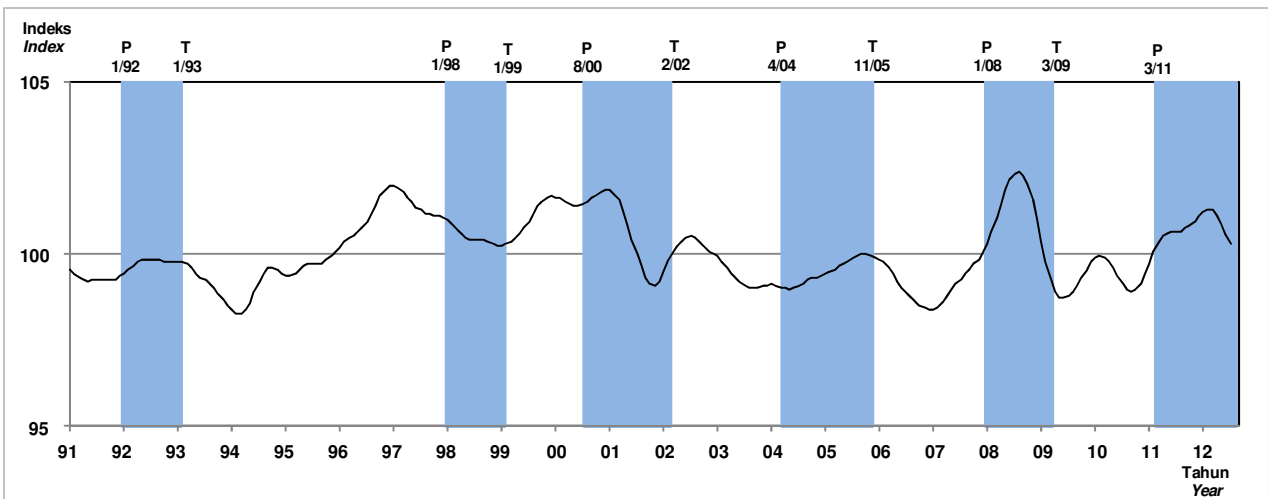
**Carta 2A: Indeks Komposit Pelopor dan Aktiviti Ekonomi (Arah Aliran Jangka Panjang=100)**

*Chart 2A: Leading Composite Index and Economic Activity (Long Term Trend=100)*



**Carta 2B: Indeks Komposit Susulan dan Aktiviti Ekonomi (Arah Aliran Jangka Panjang=100)**

*Chart 2B: Lagging Composite Index and Economic Activity (Long Term Trend=100)*



Nota/Note :

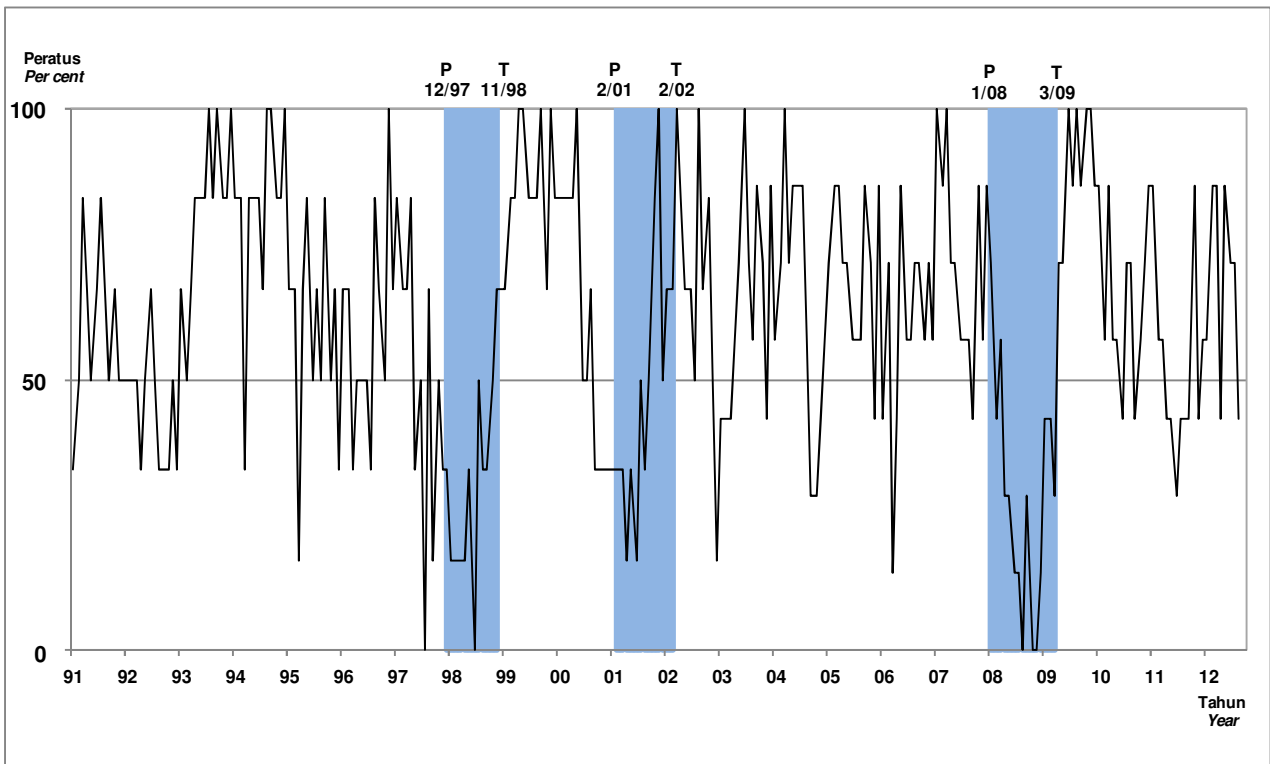
Kawasan berlorek adalah kemelesetan kitaran perniagaan (Carta 1) dan kemelesetan kitaran pertumbuhan (Carta 2A dan 2B) di Malaysia.

*Shaded areas are business cycle recession (Chart 1) and growth cycle recession (Chart 2A and 2B) in Malaysia.*

**P** Puncak/Peak      **T** Kawah/Trough

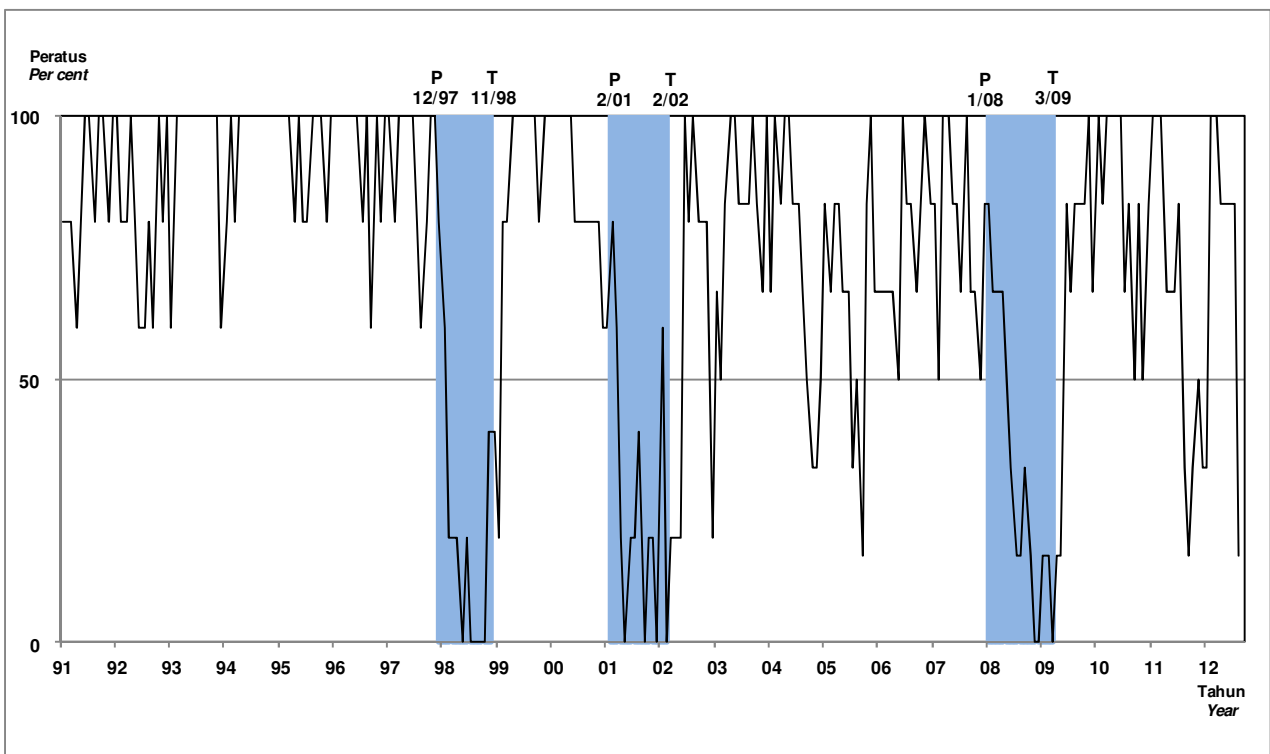
**Carta 3 : Indeks Difusi Pelopor dan Kitaran Perniagaan**

*Chart 3 : Leading Diffusion Index and Business Cycle*



**Carta 4 : Indeks Difusi Serentak dan Kitaran Perniagaan**

*Chart 4 : Coincident Diffusion Index and Business Cycle*



Nota/Note :

Kawasan berlorek adalah kemelesetan kitaran perniagaan di Malaysia.

*Shaded areas are business cycle recession in Malaysia.*

P Puncak/Peak

T Kawah/Trough

**Jadual 4 : Indeks Komposit dan Indeks Difusi**

*Table 4 : Composite Index and Diffusion Index*

| Tempoh<br>Period | Indeks Komposit<br><i>Composite Index</i>        |  |  |  |   |                                    | Indeks Difusi<br><i>Diffusion Index</i>          |  |
|------------------|--|--|--|--|---|------------------------------------|--|--|
|                  | Indeks Pelopor (IP)<br><i>Leading Index (LI)</i> |  | Indeks Serentak (IS)<br><i>Coincident Index (CI)</i> |  | Indeks Susulan (ISL)<br><i>Lagging Index (LG)</i> |                                    | Indeks Pelopor (IP)<br><i>Leading Index (LI)</i> | Indeks Serentak (IS)<br><i>Coincident Index (CI)</i> |
|                  | Perubahan<br>2005=100                            |  | Perubahan<br>2005=100                                |  | Perubahan<br>2005=100                             |                                    | Peratus (%)                                      | Peratus (%)  |
|                  | Tahunan<br><i>Annual Change</i><br>(%)           | Tahunan<br><i>Annual Change</i><br>(%) | Tahunan<br><i>Annual Change</i><br>(%)               | Tahunan<br><i>Annual Change</i><br>(%) | Tahunan<br><i>Annual Change</i><br>(%)            | Peratus (%)<br><i>Per cent (%)</i> | Peratus (%)<br><i>Per cent (%)</i>               |  |
| 1992 Jan.        | 68.5   | 1.9                                    | 62.2   | 9.6                                    | 58.3  | 4.1                                | 50.0   | 100.0  |
| Feb.             | 67.7   | -0.5                                   | 61.7   | 7.7                                    | 58.6  | 3.7                                | 50.0   | 80.0   |
| Mac              | 68.5   | 0.3                                    | 61.8   | 8.7                                    | 58.9  | 4.5                                | 50.0   | 80.0   |
| April            | 68.2   | -0.1                                   | 62.3   | 8.3                                    | 58.8  | 5.4                                | 33.3   | 100.0  |
| Mei              | 68.5   | -0.5                                   | 62.4   | 7.4                                    | 59.5  | 4.7                                | 50.0   | 80.0   |
| Jun              | 68.7   | 0.3                                    | 62.5   | 6.7                                    | 60.0  | 6.4                                | 66.7   | 60.0   |
| Julai            | 68.6   | -1.6                                   | 63.4   | 7.2                                    | 59.9  | 5.1                                | 50.0   | 60.0   |
| Ogos             | 68.1   | -1.8                                   | 63.2   | 6.3                                    | 59.5  | 3.0                                | 33.3   | 80.0   |
| Sept.            | 68.1   | -1.4                                   | 62.7   | 4.7                                    | 60.4  | 5.6                                | 33.3   | 60.0   |
| Okt.             | 68.7   | -1.0                                   | 64.2   | 6.2                                    | 61.0  | 5.5                                | 33.3   | 100.0  |
| Nov.             | 68.7   | 2.4                                    | 63.9   | 5.2                                    | 60.6  | 5.5                                | 50.0   | 80.0   |
| Dis.             | 68.8   | 1.5                                    | 64.4   | 6.1                                    | 60.5  | 4.6                                | 33.3   | 100.0  |
| 1993 Jan.        | 69.5   | 1.4                                    | 64.3   | 3.5                                    | 61.1  | 4.8                                | 66.7   | 60.0   |
| Feb.             | 69.9   | 3.2                                    | 66.5   | 7.8                                    | 61.7  | 5.4                                | 50.0   | 100.0  |
| Mac              | 69.4   | 1.2                                    | 66.2   | 7.2                                    | 61.9  | 5.1                                | 66.7   | 100.0  |
| April            | 72.0   | 5.6                                    | 67.3   | 8.0                                    | 62.2  | 5.8                                | 83.3   | 100.0  |
| Mei              | 72.3   | 5.6                                    | 67.6   | 8.5                                    | 62.4  | 4.9                                | 83.3   | 100.0  |
| Jun              | 72.2   | 5.0                                    | 68.4   | 9.4                                    | 61.4  | 2.2                                | 83.3   | 100.0  |
| Julai            | 72.8   | 6.0                                    | 68.8   | 8.6                                    | 62.6  | 4.4                                | 100.0  | 100.0  |
| Ogos             | 73.2   | 7.5                                    | 68.9   | 8.9                                    | 62.4  | 5.0                                | 83.3   | 100.0  |
| Sept.            | 75.2   | 10.5                                   | 69.6   | 10.9                                   | 63.2  | 4.7                                | 100.0  | 100.0  |
| Okt.             | 76.0   | 10.6                                   | 69.9   | 8.9                                    | 63.2  | 3.6                                | 83.3   | 100.0  |
| Nov.             | 75.8   | 10.4                                   | 70.6   | 10.5                                   | 63.1  | 4.1                                | 83.3   | 100.0  |
| Dis.             | 77.8   | 13.0                                   | 69.5   | 8.0                                    | 63.2  | 4.5                                | 100.0  | 60.0   |
| 1994 Jan.        | 78.1   | 12.5                                   | 71.2   | 10.6                                   | 63.3  | 3.6                                | 83.3   | 80.0   |
| Feb.             | 78.8   | 12.8                                   | 71.1   | 7.0                                    | 64.1  | 3.8                                | 83.3   | 100.0  |
| Mac              | 77.2   | 11.2                                   | 71.5   | 8.0                                    | 63.7  | 2.9                                | 33.3   | 80.0   |
| April            | 80.7   | 12.1                                   | 72.6   | 7.9                                    | 63.8  | 2.7                                | 83.3   | 100.0  |
| Mei              | 78.7   | 8.8                                    | 72.7   | 7.5                                    | 64.3  | 3.2                                | 83.3   | 100.0  |
| Jun              | 80.4   | 11.4                                   | 73.5   | 7.4                                    | 64.0  | 4.3                                | 83.3   | 100.0  |
| Julai            | 80.0   | 9.9                                    | 73.4   | 6.6                                    | 65.5  | 4.6                                | 66.7   | 100.0  |
| Ogos             | 81.9   | 11.8                                   | 74.4   | 8.1                                    | 66.3  | 6.2                                | 100.0  | 100.0  |
| Sept.            | 82.8   | 10.1                                   | 75.1   | 7.9                                    | 66.5  | 5.1                                | 100.0  | 100.0  |
| Okt.             | 82.6   | 8.8                                    | 75.1   | 7.4                                    | 67.0  | 5.9                                | 83.3   | 100.0  |
| Nov.             | 82.1   | 8.3                                    | 75.7   | 7.3                                    | 66.9  | 5.9                                | 83.3   | 100.0  |
| Dis.             | 82.7   | 6.3                                    | 76.3   | 9.8                                    | 67.1  | 6.2                                | 100.0  | 100.0  |



**Jadual 4 : Indeks Komposit dan Indeks Difusi (samb.)**
*Table 4 : Composite Index and Diffusion Index (cont'd)*

| Tempoh<br>Period | Indeks Komposit<br><i>Composite Index</i>        |   |  |   |   |   | Indeks Difusi<br><i>Diffusion Index</i>          |  |
|------------------|--|---|--|---|---|---|--|--|
|                  | Indeks Pelopor (IP)<br><i>Leading Index (LI)</i> |   | Indeks Serentak (IS)<br><i>Coincident Index (CI)</i> |   | Indeks Susulan (ISL)<br><i>Lagging Index (LG)</i> |   | Indeks Pelopor (IP)<br><i>Leading Index (LI)</i> | Indeks Serentak (IS)<br><i>Coincident Index (CI)</i> |
|                  | 2005=100   | Perubahan<br>Tahunan<br><i>Annual Change</i><br>(%) | 2005=100   | Perubahan<br>Tahunan<br><i>Annual Change</i><br>(%) | 2005=100  | Perubahan<br>Tahunan<br><i>Annual Change</i><br>(%) | Peratus (%)<br><i>Per cent (%)</i>               | Peratus (%)<br><i>Per cent (%)</i>                   |
|                  |  |   |  |   |   |   |  |  |
| 1995 Jan.        | 81.6   | 4.5   | 76.8   | 8.0   | 67.8  | 7.1   | 66.7   | 100.0  |
| Feb.             | 82.9   | 5.3   | 77.4   | 8.8   | 66.9  | 4.4   | 66.7   | 100.0  |
| Mac              | 82.0   | 6.2   | 77.0   | 7.7   | 67.2  | 5.6   | 16.7   | 100.0  |
| April            | 83.0   | 2.8   | 77.8   | 7.2   | 68.4  | 7.1   | 66.7   | 80.0   |
| Mei              | 83.7   | 6.3   | 79.2   | 9.0   | 68.2  | 6.0   | 83.3   | 100.0  |
| Jun              | 84.0   | 4.6   | 79.0   | 7.4   | 69.7  | 9.0   | 50.0   | 80.0   |
| Julai            | 84.8   | 6.1   | 79.2   | 7.9   | 69.8  | 6.6   | 66.7   | 80.0   |
| Ogos             | 84.5   | 3.2   | 79.7   | 7.2   | 69.0  | 4.1   | 50.0   | 100.0  |
| Sept.            | 85.1   | 2.8   | 80.2   | 6.8   | 69.8  | 5.0   | 83.3   | 100.0  |
| Okt.             | 84.2   | 1.8   | 80.5   | 7.2   | 69.9  | 4.4   | 50.0   | 100.0  |
| Nov.             | 85.0   | 3.4   | 81.1   | 7.1   | 70.4  | 5.3   | 66.7   | 80.0   |
| Dis.             | 84.6   | 2.4   | 81.2   | 6.3   | 70.7  | 5.3   | 33.3   | 100.0  |
| 1996 Jan.        | 86.1   | 5.5   | 82.3   | 7.0   | 71.5  | 5.4   | 66.7   | 100.0  |
| Feb.             | 84.8   | 2.3   | 81.9   | 5.7   | 71.5  | 7.0   | 66.7   | 100.0  |
| Mac              | 85.0   | 3.7   | 83.5   | 8.5   | 72.3  | 7.5   | 33.3   | 100.0  |
| April            | 85.9   | 3.6   | 83.5   | 7.3   | 72.5  | 6.0   | 50.0   | 100.0  |
| Mei              | 85.2   | 1.8   | 83.8   | 5.8   | 72.5  | 6.4   | 50.0   | 100.0  |
| Jun              | 84.9   | 1.0   | 83.6   | 5.8   | 73.7  | 5.7   | 50.0   | 100.0  |
| Julai            | 86.0   | 1.4   | 84.6   | 6.9   | 72.7  | 4.2   | 33.3   | 80.0   |
| Ogos             | 86.4   | 2.2   | 84.6   | 6.1   | 73.8  | 6.9   | 83.3   | 100.0  |
| Sept.            | 86.2   | 1.2   | 84.8   | 5.7   | 74.0  | 6.1   | 66.7   | 60.0   |
| Okt.             | 86.8   | 3.2   | 85.4   | 6.1   | 75.2  | 7.6   | 50.0   | 100.0  |
| Nov.             | 87.7   | 3.2   | 85.1   | 4.9   | 75.1  | 6.6   | 100.0  | 80.0   |
| Dis.             | 86.4   | 2.1   | 85.7   | 5.6   | 76.1  | 7.7   | 66.7   | 100.0  |
| 1997 Jan.        | 89.0   | 3.3   | 86.9   | 5.7   | 76.6  | 7.2   | 83.3   | 100.0  |
| Feb.             | 86.5   | 2.0   | 85.7   | 4.6   | 76.2  | 6.5   | 66.7   | 80.0   |
| Mac              | 88.4   | 4.1   | 86.8   | 3.9   | 76.9  | 6.4   | 66.7   | 100.0  |
| April            | 87.1   | 1.4   | 87.0   | 4.1   | 77.0  | 6.2   | 83.3   | 100.0  |
| Mei              | 87.0   | 2.1   | 87.2   | 4.0   | 76.8  | 5.9   | 33.3   | 100.0  |
| Jun              | 87.4   | 2.9   | 87.2   | 4.4   | 77.3  | 4.9   | 50.0   | 100.0  |
| Julai            | 86.5   | 0.5   | 87.5   | 3.4   | 77.2  | 6.1   | 0.0  | 80.0   |
| Ogos             | 86.4   | 0.0   | 87.9   | 3.9   | 77.6  | 5.2   | 66.7   | 80.0   |
| Sept.            | 86.4   | 0.2   | 87.9   | 3.6   | 77.7  | 4.9   | 16.7   | 80.0   |
| Okt.             | 86.0   | -1.0  | 88.1   | 3.2   | 78.4  | 4.3   | 50.0   | 100.0  |
| Nov.             | 84.3   | -3.9  | 88.1   | 3.6   | 78.6  | 4.7   | 33.3   | 100.0  |
| Dis.             | 84.7   | -2.0  | 88.2   | 2.9   | 78.3  | 3.0   | 33.3   | 80.0   |

**Jadual 4 : Indeks Komposit dan Indeks Difusi (samb.)**
*Table 4 : Composite Index and Diffusion Index (cont'd)*

| Tempoh<br>Period | Indeks Komposit<br><i>Composite Index</i>        |   |  |   |   |   | Indeks Difusi<br><i>Diffusion Index</i>          |  |
|------------------|--|---|--|---|---|---|--|--|
|                  | Indeks Pelopor (IP)<br><i>Leading Index (LI)</i> |   | Indeks Serentak (IS)<br><i>Coincident Index (CI)</i> |   | Indeks Susulan (ISL)<br><i>Lagging Index (LG)</i> |   | Indeks Pelopor (IP)<br><i>Leading Index (LI)</i> | Indeks Serentak (IS)<br><i>Coincident Index (CI)</i> |
|                  | 2005=100   | Perubahan<br>Tahunan<br><i>Annual Change</i><br>(%) | 2005=100   | Perubahan<br>Tahunan<br><i>Annual Change</i><br>(%) | 2005=100  | Perubahan<br>Tahunan<br><i>Annual Change</i><br>(%) | Peratus (%)<br><i>Per cent (%)</i>               | Peratus (%)<br><i>Per cent (%)</i>                   |
|                  |  |   |  |   |   |   |  |  |
| 1998 Jan.        | 82.5   | -7.3  | 87.4   | 0.5   | 78.6  | 2.6   | 16.7   | 60.0   |
| Feb.             | 83.2   | -3.9  | 86.9   | 1.5   | 80.5  | 5.6   | 16.7   | 20.0   |
| Mac              | 82.3   | -6.9  | 86.6   | -0.2  | 79.6  | 3.4   | 16.7   | 20.0   |
| April            | 80.9   | -7.2  | 85.9   | -1.3  | 79.0  | 2.6   | 16.7   | 20.0   |
| Mei              | 80.7   | -7.3  | 85.0   | -2.5  | 79.4  | 3.4   | 33.3   | 0.0  |
| Jun              | 79.9   | -8.6  | 84.8   | -2.8  | 80.1  | 3.6   | 0.0  | 20.0   |
| Julai            | 79.8   | -7.8  | 84.3   | -3.6  | 80.2  | 3.8   | 50.0   | 0.0  |
| Ogos             | 78.9   | -8.7  | 83.8   | -4.7  | 79.7  | 2.8   | 33.3   | 0.0  |
| Sept.            | 79.6   | -7.8  | 83.9   | -4.5  | 81.2  | 4.5   | 33.3   | 0.0  |
| Okt.             | 79.8   | -7.2  | 83.8   | -4.9  | 81.4  | 3.8   | 50.0   | 0.0  |
| Nov.             | 80.5   | -4.4  | 83.6   | -5.1  | 81.3  | 3.4   | 66.7   | 40.0   |
| Dis.             | 81.9   | -3.3  | 84.0   | -4.8  | 81.3  | 3.8   | 66.7   | 40.0   |
| 1999 Jan.        | 81.2   | -1.5  | 83.6   | -4.3  | 81.9  | 4.2   | 66.7   | 20.0   |
| Feb.             | 81.6   | -1.9  | 84.6   | -2.7  | 81.2  | 0.9   | 83.3   | 80.0   |
| Mac              | 81.5   | -1.0  | 86.2   | -0.5  | 82.2  | 3.3   | 83.3   | 80.0   |
| April            | 84.2   | 4.1   | 87.7   | 2.1   | 82.8  | 4.8   | 100.0  | 100.0  |
| Mei              | 84.8   | 5.2   | 87.7   | 3.2   | 83.2  | 4.8   | 100.0  | 100.0  |
| Jun              | 85.7   | 7.3   | 88.7   | 4.6   | 82.8  | 3.4   | 83.3   | 100.0  |
| Julai            | 86.7   | 8.7   | 89.3   | 5.9   | 83.8  | 4.5   | 83.3   | 100.0  |
| Ogos             | 86.2   | 9.2   | 89.5   | 6.8   | 83.7  | 5.0   | 83.3   | 100.0  |
| Sept.            | 87.0   | 9.2   | 90.2   | 7.5   | 84.6  | 4.2   | 100.0  | 100.0  |
| Okt.             | 86.7   | 8.6   | 90.1   | 7.4   | 85.0  | 4.5   | 66.7   | 80.0   |
| Nov.             | 87.3   | 8.4   | 91.1   | 9.0   | 85.3  | 4.9   | 100.0  | 100.0  |
| Dis.             | 90.2   | 10.1  | 91.9   | 9.3   | 86.5  | 6.4   | 83.3   | 100.0  |
| 2000 Jan.        | 88.0   | 8.3   | 92.0   | 10.0  | 85.3  | 4.2   | 83.3   | 100.0  |
| Feb.             | 90.0   | 10.3  | 93.2   | 10.3  | 86.6  | 6.6   | 83.3   | 100.0  |
| Mac              | 90.2   | 10.7  | 93.3   | 8.3   | 86.7  | 5.4   | 83.3   | 100.0  |
| April            | 90.5   | 7.5   | 93.1   | 6.2   | 86.5  | 4.5   | 83.3   | 100.0  |
| Mei              | 90.7   | 7.0   | 94.8   | 8.1   | 86.6  | 4.1   | 100.0  | 100.0  |
| Jun              | 90.5   | 5.6   | 95.8   | 8.0   | 86.5  | 4.5   | 50.0   | 80.0   |
| Julai            | 90.9   | 4.8   | 95.4   | 6.8   | 87.5  | 4.4   | 50.0   | 80.0   |
| Ogos             | 91.8   | 6.5   | 96.5   | 7.8   | 87.3  | 4.2   | 66.7   | 80.0   |
| Sept.            | 90.6   | 4.2   | 96.6   | 7.1   | 87.9  | 3.9   | 33.3   | 80.0   |
| Okt.             | 90.7   | 4.6   | 96.2   | 6.8   | 88.2  | 3.7   | 33.3   | 80.0   |
| Nov.             | 90.5   | 3.7   | 97.0   | 6.4   | 88.4  | 3.7   | 33.3   | 80.0   |
| Dis.             | 90.1   | -0.1  | 96.4   | 4.9   | 88.6  | 2.5   | 33.3   | 60.0   |

**Jadual 4 : Indeks Komposit dan Indeks Difusi (samb.)***Table 4 : Composite Index and Diffusion Index (cont'd)*

| Tempoh<br>Period | Indeks Komposit<br>Composite Index        |  |   |  |  |  | Indeks Difusi<br>Diffusion Index          |   |
|------------------|---|--|---|--|--|--|---|---|
|                  | Indeks Pelopor (IP)<br>Leading Index (LI) |  | Indeks Serentak (IS)<br>Coincident Index (CI) |  | Indeks Susulan (ISL)<br>Lagging Index (LG) |  | Indeks Pelopor (IP)<br>Leading Index (LI) | Indeks Serentak (IS)<br>Coincident Index (CI) |
|                  | 2005=100                                  | Perubahan<br>Tahunan<br>Annual Change<br>(%) | 2005=100                                      | Perubahan<br>Tahunan<br>Annual Change<br>(%) | 2005=100                                   | Perubahan<br>Tahunan<br>Annual Change<br>(%) | Peratus (%)<br>Per cent (%)               | Peratus (%)<br>Per cent (%)                   |
|                  |   |  |   |  |  |  |   |   |
| 2001 Jan.        | 89.8                                      | 2.1  | 96.7  | 5.2  | 88.9                                       | 4.1  | 33.3                                      | 80.0  |
| Feb.             | 90.1                                      | 0.2  | 97.2  | 4.2  | 90.0                                       | 4.0  | 33.3                                      | 80.0  |
| Mac              | 88.4                                      | -2.0   | 97.2  | 4.1  | 89.5                                       | 3.3  | 33.3                                      | 60.0  |
| April            | 87.8                                      | -3.0   | 95.9  | 3.0  | 89.7                                       | 3.7  | 16.7                                      | 20.0  |
| Mei              | 87.8                                      | -3.2   | 95.1  | 0.4  | 90.5                                       | 4.4  | 33.3                                      | 20.0  |
| Jun              | 88.3                                      | -2.4   | 94.2  | -1.6   | 88.5                                       | 2.3  | 16.7                                      | 20.0  |
| Julai            | 88.2                                      | -2.9   | 94.0  | -1.5   | 89.5                                       | 2.3  | 50.0                                      | 20.0  |
| Ogos             | 88.0                                      | -4.1   | 94.0  | -2.6   | 89.3                                       | 2.3  | 33.3                                      | 40.0  |
| Sept.            | 88.4                                      | -2.4   | 93.6  | -3.1   | 89.2                                       | 1.4  | 50.0                                      | 0.0   |
| Okt.             | 89.0                                      | -1.8   | 94.0  | -2.2   | 88.9                                       | 0.8  | 83.3                                      | 20.0  |
| Nov.             | 89.9                                      | -0.7   | 93.3  | -3.8   | 88.8                                       | 0.4  | 100.0                                     | 20.0  |
| Dis.             | 89.2                                      | -1.0   | 92.2  | -4.3   | 88.9                                       | 0.3  | 50.0                                      | 0.0   |
| 2002 Jan.        | 90.4                                      | 0.6  | 93.0  | -3.9   | 88.6                                       | -0.3   | 66.7                                      | 60.0  |
| Feb.             | 89.9                                      | -0.3   | 91.3  | -6.0   | 90.2                                       | 0.3  | 66.7                                      | 0.0   |
| Mac              | 90.9                                      | 2.8  | 92.6  | -4.7   | 90.8                                       | 1.5  | 100.0                                     | 20.0  |
| April            | 91.7                                      | 4.5  | 92.7  | -3.3   | 92.5                                       | 3.1  | 83.3                                      | 20.0  |
| Mei              | 91.5                                      | 4.1  | 92.9  | -2.4   | 90.9                                       | 0.4  | 66.7                                      | 20.0  |
| Jun              | 91.2                                      | 3.3  | 94.4  | 0.2  | 91.0                                       | 2.8  | 66.7                                      | 100.0   |
| Julai            | 91.8                                      | 4.1  | 94.4  | 0.5  | 92.4                                       | 3.2  | 50.0                                      | 80.0  |
| Ogos             | 91.9                                      | 4.5  | 94.5  | 0.5  | 93.0                                       | 4.2  | 100.0                                     | 100.0   |
| Sept.            | 91.4                                      | 3.4  | 94.3  | 0.7  | 92.7                                       | 3.9  | 66.7                                      | 80.0  |
| Okt.             | 91.8                                      | 3.1  | 94.1  | 0.1  | 93.5                                       | 5.1  | 83.3                                      | 80.0  |
| Nov.             | 91.9                                      | 2.3  | 93.9  | 0.6  | 92.2                                       | 3.9  | 50.0                                      | 80.0  |
| Dis.             | 88.9                                      | -0.3   | 93.1  | 0.9  | 90.9                                       | 2.3  | 16.7                                      | 20.0  |
| 2003 Jan.        | 91.0                                      | 0.7  | 94.7  | 1.9  | 94.2                                       | 6.3  | 42.9                                      | 66.7  |
| Feb.             | 91.4                                      | 1.6  | 94.0  | 2.9  | 94.2                                       | 4.4  | 42.9                                      | 83.3  |
| Mac              | 90.8                                      | 0.0  | 94.5  | 2.0  | 93.0                                       | 2.4  | 42.9                                      | 83.3  |
| April            | 91.5                                      | -0.2   | 95.1  | 2.6  | 93.5                                       | 1.1  | 57.1                                      | 100.0   |
| Mei              | 92.0                                      | 0.6  | 94.9  | 2.1  | 93.8                                       | 3.2  | 71.4                                      | 100.0   |
| Jun              | 92.1                                      | 1.0  | 95.3  | 0.9  | 92.8                                       | 2.0  | 100.0                                     | 83.3  |
| Julai            | 92.8                                      | 1.0  | 96.1  | 1.7  | 94.1                                       | 1.8  | 71.4                                      | 83.3  |
| Ogos             | 92.2                                      | 0.4  | 95.9  | 1.5  | 93.5                                       | 0.5  | 57.1                                      | 83.3  |
| Sept.            | 94.0                                      | 2.8  | 96.2  | 2.0  | 94.3                                       | 1.8  | 85.7                                      | 100.0   |
| Okt.             | 94.8                                      | 3.4  | 96.3  | 2.3  | 94.2                                       | 0.7  | 71.4                                      | 83.3  |
| Nov.             | 94.5                                      | 2.8  | 96.0  | 2.2  | 94.3                                       | 2.3  | 42.9                                      | 66.7  |
| Dis.             | 95.7                                      | 7.6  | 97.7  | 5.0  | 94.6                                       | 4.1  | 85.7                                      | 100.0   |

**Jadual 4 : Indeks Komposit dan Indeks Difusi (samb.)**

*Table 4 : Composite Index and Diffusion Index (cont'd)*

| Tempoh<br>Period | Indeks Komposit<br><i>Composite Index</i>        |   |  |   |   |   | Indeks Difusi<br><i>Diffusion Index</i>          |  |
|------------------|--|---|--|---|---|---|--|--|
|                  | Indeks Pelopor (IP)<br><i>Leading Index (LI)</i> |   | Indeks Serentak (IS)<br><i>Coincident Index (CI)</i> |   | Indeks Susulan (ISL)<br><i>Lagging Index (LG)</i> |   | Indeks Pelopor (IP)<br><i>Leading Index (LI)</i> | Indeks Serentak (IS)<br><i>Coincident Index (CI)</i> |
|                  | 2005=100   | Perubahan<br>Tahunan<br><i>Annual Change</i><br>(%) | 2005=100   | Perubahan<br>Tahunan<br><i>Annual Change</i><br>(%) | 2005=100  | Perubahan<br>Tahunan<br><i>Annual Change</i><br>(%) | Peratus (%)<br><i>Per cent (%)</i>               | Peratus (%)<br><i>Per cent (%)</i>                   |
|                  |  |   |  |   |   |   |  |  |
| 2004 Jan.        | 95.7   | 5.2   | 97.6   | 3.1   | 95.2  | 1.0   | 57.1   | 66.7   |
| Feb.             | 96.7   | 5.8   | 97.9   | 4.1   | 96.1  | 2.0   | 71.4   | 100.0  |
| Mac              | 98.7   | 8.6   | 98.4   | 4.2   | 94.9  | 2.0   | 100.0  | 83.3   |
| April            | 97.8   | 7.0   | 99.2   | 4.3   | 96.1  | 2.7   | 71.4   | 100.0  |
| Mei              | 97.5   | 5.9   | 98.1   | 3.4   | 96.0  | 2.3   | 85.7   | 100.0  |
| Jun              | 98.5   | 7.0   | 98.9   | 3.8   | 95.7  | 3.1   | 85.7   | 100.0  |
| Julai            | 98.0   | 5.6   | 98.4   | 2.5   | 96.2  | 2.3   | 85.7   | 83.3   |
| Ogos             | 98.0   | 6.3   | 98.4   | 2.6   | 96.6  | 3.2   | 57.1   | 66.7   |
| Sept.            | 98.5   | 4.8   | 98.4   | 2.3   | 97.3  | 3.1   | 28.6   | 50.0   |
| Okt.             | 97.5   | 2.8   | 98.5   | 2.4   | 97.6  | 3.6   | 28.6   | 50.0   |
| Nov.             | 97.5   | 3.2   | 97.5   | 1.6   | 98.3  | 4.2   | 42.9   | 33.3   |
| Dis.             | 98.8   | 3.2   | 99.4   | 1.7   | 98.0  | 3.5   | 57.1   | 50.0   |
| 2005 Jan.        | 98.6   | 3.0   | 99.4   | 1.8   | 97.5  | 2.4   | 71.4   | 66.7   |
| Feb.             | 99.8   | 3.2   | 98.9   | 1.0   | 99.0  | 3.1   | 85.7   | 66.7   |
| Mac              | 99.5   | 0.8   | 100.1  | 1.7   | 98.0  | 3.2   | 85.7   | 83.3   |
| April            | 99.4   | 1.6   | 99.7   | 0.5   | 99.5  | 3.6   | 71.4   | 83.3   |
| Mei              | 99.9   | 2.5   | 99.0   | 0.9   | 99.9  | 4.1   | 71.4   | 66.7   |
| Jun              | 99.7   | 1.1   | 99.9   | 1.0   | 100.0   | 4.5   | 57.1   | 66.7   |
| Julai            | 100.4  | 2.4   | 99.5   | 1.1   | 99.5  | 3.4   | 57.1   | 50.0   |
| Ogos             | 100.3  | 2.3   | 100.2  | 1.8   | 100.6   | 4.1   | 57.1   | 50.0   |
| Sept.            | 100.9  | 2.4   | 100.6  | 2.2   | 101.3   | 4.2   | 85.7   | 33.3   |
| Okt.             | 101.0  | 3.6   | 100.9  | 2.4   | 101.5   | 4.0   | 71.4   | 66.7   |
| Nov.             | 99.3   | 1.9   | 100.8  | 3.3   | 101.4   | 3.1   | 42.9   | 100.0  |
| Dis.             | 101.2  | 2.5   | 101.1  | 1.7   | 101.8   | 3.9   | 85.7   | 66.7   |
| 2006 Jan.        | 100.5  | 2.0   | 101.3  | 1.9   | 101.5   | 4.1   | 42.9   | 83.3   |
| Feb.             | 102.1  | 2.4   | 102.0  | 3.2   | 102.3   | 3.3   | 71.4   | 66.7   |
| Mac              | 100.7  | 1.2   | 102.9  | 2.9   | 102.7   | 4.8   | 14.3   | 50.0   |
| April            | 100.7  | 1.3   | 103.1  | 3.4   | 102.4   | 2.9   | 42.9   | 66.7   |
| Mei              | 101.6  | 1.8   | 103.6  | 4.6   | 103.2   | 3.3   | 85.7   | 50.0   |
| Jun              | 102.3  | 2.6   | 104.6  | 4.7   | 102.1   | 2.1   | 57.1   | 100.0  |
| Julai            | 101.7  | 1.3   | 105.2  | 5.7   | 102.5   | 3.1   | 57.1   | 83.3   |
| Ogos             | 103.2  | 2.9   | 105.9  | 5.7   | 102.8   | 2.2   | 71.4   | 83.3   |
| Sept.            | 102.4  | 1.5   | 106.1  | 5.5   | 103.1   | 1.8   | 71.4   | 66.7   |
| Okt.             | 102.9  | 1.9   | 105.9  | 5.0   | 103.1   | 1.6   | 57.1   | 83.3   |
| Nov.             | 104.3  | 5.0   | 108.1  | 7.3   | 103.6   | 2.2   | 71.4   | 100.0  |
| Dis.             | 104.2  | 2.9   | 107.2  | 6.0   | 103.2   | 1.4   | 57.1   | 83.3   |



**Jadual 4 : Indeks Komposit dan Indeks Difusi (samb.)***Table 4 : Composite Index and Diffusion Index (cont'd)*

| Tempoh<br>Period | Indeks Komposit<br>Composite Index        |   |  |  |  |  | Indeks Difusi<br>Diffusion Index          |   |
|------------------|---|---|--|--|--|--|---|---|
|                  | Indeks Pelopor (IP)<br>Leading Index (LI) | Indeks Serentak (IS)<br>Coincident Index (CI) | Indeks Susulan (ISL)<br>Lagging Index (LG) |  |  |  | Indeks Pelopor (IP)<br>Leading Index (LI) | Indeks Serentak (IS)<br>Coincident Index (CI) |
|                  | 2005=100                                  | 2005=100                                      | 2005=100                                   | Perubahan<br>Tahunan<br>Annual Change<br>(%) | Perubahan<br>Tahunan<br>Annual Change<br>(%) | Perubahan<br>Tahunan<br>Annual Change<br>(%) | Peratus (%)<br>Per cent (%)               | Peratus (%)<br>Per cent (%)                   |
|                  |   |   |  |  |  |  |   |   |
| 2007 Jan.        | 105.3                                     | 106.8   | 104.1                                      | 4.8  | 5.4  | 2.6  | 100.0                                     | 83.3  |
| Feb.             | 105.6                                     | 105.9   | 104.1                                      | 3.4  | 3.8  | 1.8  | 85.7                                      | 50.0  |
| Mac              | 106.3                                     | 109.7   | 103.4                                      | 5.6  | 6.6  | 0.7  | 100.0                                     | 100.0   |
| April            | 105.6                                     | 109.1   | 105.1                                      | 4.9  | 5.8  | 2.7  | 71.4                                      | 100.0   |
| Mei              | 106.7                                     | 109.5   | 105.3                                      | 5.0  | 5.7  | 2.1  | 71.4                                      | 83.3  |
| Jun              | 106.1                                     | 108.8   | 106.3                                      | 3.7  | 4.0  | 4.2  | 57.1                                      | 83.3  |
| Julai            | 107.1                                     | 109.1   | 106.3                                      | 5.4  | 3.7  | 3.7  | 57.1                                      | 66.7  |
| Ogos             | 106.6                                     | 109.4   | 106.7                                      | 3.3  | 3.4  | 3.8  | 57.1                                      | 100.0   |
| Sept.            | 106.6                                     | 109.6   | 106.7                                      | 4.1  | 3.3  | 3.4  | 42.9                                      | 66.7  |
| Okt.             | 108.0                                     | 109.5   | 108.0                                      | 5.0  | 3.4  | 4.7  | 85.7                                      | 66.7  |
| Nov.             | 107.3                                     | 110.4   | 108.2                                      | 2.9  | 2.2  | 4.5  | 57.1                                      | 66.7  |
| Dis.             | 108.6                                     | 111.5   | 108.4                                      | 4.3  | 4.1  | 5.1  | 85.7                                      | 100.0   |
| 2008 Jan.        | 108.6                                     | 113.2   | 109.5                                      | 3.1  | 5.9  | 5.2  | 71.4                                      | 100.0   |
| Feb.             | 108.0                                     | 112.0   | 109.7                                      | 2.3  | 5.7  | 5.3  | 42.9                                      | 83.3  |
| Mac              | 107.7                                     | 111.3   | 109.0                                      | 1.3  | 1.4  | 5.4  | 57.1                                      | 66.7  |
| April            | 107.9                                     | 111.9   | 111.8                                      | 2.2  | 2.5  | 6.3  | 28.6                                      | 83.3  |
| Mei              | 107.4                                     | 110.8   | 112.3                                      | 0.6  | 1.2  | 6.6  | 28.6                                      | 50.0  |
| Jun              | 106.2                                     | 109.8   | 113.4                                      | 0.1  | 1.0  | 6.6  | 14.3                                      | 33.3  |
| Julai            | 105.4                                     | 110.3   | 113.3                                      | -1.7   | 1.1  | 6.6  | 14.3                                      | 16.7  |
| Ogos             | 104.4                                     | 106.4   | 113.1                                      | -2.0   | -2.8   | 6.0  | 0.0                                       | 16.7  |
| Sept.            | 105.4                                     | 106.6   | 115.1                                      | -1.1   | -2.7   | 7.8  | 28.6                                      | 33.3  |
| Okt.             | 104.1                                     | 105.7   | 113.6                                      | -3.6   | -3.5   | 5.2  | 0.0                                       | 16.7  |
| Nov.             | 103.2                                     | 104.2   | 115.4                                      | -3.9   | -5.6   | 6.6  | 0.0                                       | 0.0   |
| Dis.             | 101.3                                     | 101.3   | 115.2                                      | -6.8   | -9.2   | 6.2  | 14.3                                      | 0.0   |
| 2009 Jan.        | 101.3                                     | 98.8  | 113.7                                      | -6.7   | -12.7  | 3.8  | 42.9                                      | 16.7  |
| Feb.             | 101.8                                     | 100.6   | 114.0                                      | -5.7   | -10.2  | 3.9  | 42.9                                      | 16.7  |
| Mac              | 102.2                                     | 98.5  | 114.0                                      | -5.1   | -11.5  | 4.6  | 28.6                                      | 0.0   |
| April            | 104.3                                     | 99.6  | 111.7                                      | -3.3   | -11.0  | -0.1   | 71.4                                      | 16.7  |
| Mei              | 104.5                                     | 101.0   | 113.1                                      | -2.7   | -8.8   | 0.7  | 71.4                                      | 16.7  |
| Jun              | 105.5                                     | 101.9   | 113.3                                      | -0.6   | -7.2   | -0.1   | 100.0                                     | 83.3  |
| Julai            | 106.5                                     | 102.8   | 113.8                                      | 1.0  | -6.8   | 0.4  | 85.7                                      | 66.7  |
| Ogos             | 106.3                                     | 103.5   | 114.5                                      | 1.8  | -2.7   | 1.2  | 100.0                                     | 83.3  |
| Sept.            | 105.9                                     | 103.5   | 114.4                                      | 0.4  | -2.9   | -0.6   | 85.7                                      | 83.3  |
| Okt.             | 106.5                                     | 105.1   | 115.2                                      | 2.3  | -0.6   | 1.4  | 100.0                                     | 83.3  |
| Nov.             | 108.1                                     | 105.3   | 115.5                                      | 4.7  | 1.0  | 0.1  | 100.0                                     | 100.0   |
| Dis.             | 108.0                                     | 105.2   | 116.7                                      | 6.6  | 3.8  | 1.3  | 85.7                                      | 66.7  |

**Jadual 4 : Indeks Komposit dan Indeks Difusi (samb.)**

*Table 4 : Composite Index and Diffusion Index (cont'd)*

| Tempoh<br>Period | Indeks Komposit<br>Composite Index        |  |   |  |  |  | Indeks Difusi<br>Diffusion Index          |   |
|------------------|---|--|---|--|--|--|---|---|
|                  | Indeks Pelopor (IP)<br>Leading Index (LI) |  | Indeks Serentak (IS)<br>Coincident Index (CI) |  | Indeks Susulan (ISL)<br>Lagging Index (LG) |  | Indeks Pelopor (IP)<br>Leading Index (LI) | Indeks Serentak (IS)<br>Coincident Index (CI) |
|                  | 2005=100                                  | Perubahan<br>Tahunan<br>Annual Change<br>(%) | 2005=100                                      | Perubahan<br>Tahunan<br>Annual Change<br>(%) | 2005=100                                   | Perubahan<br>Tahunan<br>Annual Change<br>(%) | Peratus (%)<br>Per cent (%)               | Peratus (%)<br>Per cent (%)                   |
|                  |   |  |   |  |  |  |   |   |
| 2010 Jan.        | 107.4                                     | 5.9  | 107.3   | 8.7  | 116.8                                      | 2.8  | 85.7                                      | 100.0   |
| Feb.             | 107.9                                     | 5.9  | 108.4   | 7.8  | 117.7                                      | 3.3  | 57.1                                      | 83.3  |
| Mac              | 109.7                                     | 7.3  | 109.7   | 11.4   | 118.3                                      | 3.8  | 85.7                                      | 100.0   |
| April            | 108.3                                     | 3.8  | 109.8   | 10.3   | 118.6                                      | 6.1  | 57.1                                      | 100.0   |
| Mei              | 108.4                                     | 3.7  | 110.9   | 9.9  | 118.2                                      | 4.5  | 57.1                                      | 100.0   |
| Jun              | 108.4                                     | 2.8  | 111.0   | 8.9  | 119.0                                      | 5.0  | 42.9                                      | 100.0   |
| Julai            | 108.3                                     | 1.7  | 109.3   | 6.4  | 118.1                                      | 3.7  | 71.4                                      | 66.7  |
| Ogos             | 109.4                                     | 2.9  | 110.2   | 6.5  | 119.1                                      | 4.0  | 71.4                                      | 83.3  |
| Sept.            | 109.2                                     | 3.2  | 110.6   | 6.9  | 118.5                                      | 3.6  | 42.9                                      | 50.0  |
| Okt.             | 109.4                                     | 2.7  | 111.2   | 5.8  | 118.1                                      | 2.5  | 57.1                                      | 83.3  |
| Nov.             | 109.9                                     | 1.7  | 111.8   | 6.3  | 119.0                                      | 3.0  | 71.4                                      | 50.0  |
| Dis.             | 111.2                                     | 3.0  | 112.1   | 6.6  | 119.3                                      | 2.3  | 85.7                                      | 83.3  |
| 2011 Jan.        | 110.8                                     | 3.2  | 113.5   | 5.7  | 122.1                                      | 4.5  | 85.7                                      | 100.0   |
| Feb.             | 110.1                                     | 2.1  | 113.6   | 4.8  | 120.6                                      | 2.4  | 57.1                                      | 100.0   |
| Mac              | 110.4                                     | 0.6  | 114.7   | 4.6  | 121.5                                      | 2.7  | 57.1                                      | 100.0   |
| April            | 109.9                                     | 1.5  | 114.2   | 4.0  | 124.8                                      | 5.3  | 42.9                                      | 66.7  |
| Mei              | 110.1                                     | 1.6  | 113.3   | 2.1  | 123.2                                      | 4.2  | 42.9                                      | 66.7  |
| Jun              | 110.3                                     | 1.8  | 114.1   | 2.8  | 124.2                                      | 4.4  | 28.6                                      | 66.7  |
| Julai            | 110.2                                     | 1.8  | 115.3   | 5.4  | 124.4                                      | 5.4  | 42.9                                      | 83.3  |
| Ogos             | 110.5                                     | 1.0  | 113.5   | 3.0  | 124.6                                      | 4.7  | 42.9                                      | 33.3  |
| Sept.            | 110.5                                     | 1.2  | 113.2   | 2.3  | 123.8                                      | 4.5  | 42.9                                      | 16.7  |
| Okt.             | 111.8                                     | 2.2  | 113.1   | 1.6  | 125.3                                      | 6.2  | 85.7                                      | 33.3  |
| Nov.             | 110.6                                     | 0.7  | 113.7   | 1.7  | 126.2                                      | 6.1  | 42.9                                      | 50.0  |
| Dis.             | 111.2                                     | 0.0  | 113.7   | 1.4  | 126.4                                      | 5.9  | 57.1                                      | 33.3  |
| 2012 Jan.        | 111.4                                     | 0.5  | 113.5   | 0.1  | 127.0                                      | 3.9  | 57.1                                      | 33.3  |
| Feb.             | 113.4                                     | 2.9  | 117.7   | 3.6  | 127.0                                      | 5.3  | 85.7                                      | 100.0   |
| Mac              | 112.8                                     | 2.2  | 118.6   | 3.4  | 128.4                                      | 5.7  | 85.7                                      | 100.0   |
| April            | 112.3                                     | 2.2  | 116.7   | 2.2  | 130.0                                      | 4.2  | 42.9                                      | 83.3  |
| Mei              | 112.6                                     | 2.3  | 116.9   | 3.2  | 129.0                                      | 4.7  | 85.7                                      | 83.3  |
| Jun              | 112.5                                     | 2.0  | 116.0   | 1.7  | 128.6                                      | 3.5  | 71.4                                      | 83.3  |
| Julai            | 112.7                                     | 2.3  | 115.5   | 0.2  | 127.3                                      | 2.3  | 71.4                                      | 83.3  |
| Ogos             | 112.7                                     | 2.0  | 115.3   | 1.6  | 128.9                                      | 3.5  | 42.9                                      | 16.7  |



# NOTA KETERANGAN

## 1.0 PENGENALAN

- 1.1 Penerbitan Penunjuk Ekonomi Malaysia ini memberikan maklumat ekonomi semasa yang bertujuan untuk memantau kedudukan ekonomi Negara. Ia terdiri daripada Indeks Pelopor, Serentak dan Susulan bagi Indeks Komposit dan Indeks Difusi yang diterbitkan secara bulanan.
- 1.2 Oleh kerana penerbitan Penunjuk Ekonomi Malaysia ini disusun semula, siri sebelumnya turut disemak berasaskan siri komponen baru.

## 2.0 OBJEKTIF

Objektif utama Penunjuk Ekonomi Malaysia adalah untuk memantau prestasi ekonomi Malaysia secara bulanan dan membantu penggubal dasar, pelabur, penyelidik serta masyarakat umum untuk menilai prestasi ekonomi.

## 3.0 SUMBER DATA

Data bagi penyediaan Indeks Komposit dan Indeks Difusi diperoleh daripada Jabatan Perangkaan Malaysia serta agensi berikut:

- i. Kementerian Perumahan dan Kerajaan Tempatan (KPKT);
- ii. Bank Negara Malaysia (BNM);
- iii. Jabatan Pengangkutan Jalan (JPJ);
- iii. Lembaga Kemajuan Perindustrian Malaysia (MIDA) dan
- iv. Kumpulan Wang Simpanan Pekerja (KWSP).

## 4.0 METODOLOGI

- 4.1 Pemilihan setiap komponen bagi Indeks Komposit adalah mengikut garis panduan yang terkandung dalam *Business Cycle Indicators Handbook*<sup>1</sup> iaitu:
  - i. **Keakuran terhadap kitaran perniagaan**  
Data siri yang dipilih perlu seiring dengan kitaran perniagaan.
  - ii. **Konsisten terhadap fungsi indeks**  
Data siri perlu sentiasa berfungsi secara konsisten sama ada sebagai indeks pelopor, serentak atau susulan.
  - iii. **Signifikan terhadap ekonomi**  
Data siri yang dipilih perlu menyumbang secara signifikan kepada aktiviti ekonomi.
  - iv. **Kecukupan statistik**  
Data mestilah dikumpul dan diproses dengan menggunakan kaedah statistik yang diperaku.
  - v. **Kelicinan**  
Pergerakan data siri masa bulan ke bulan mestilah licin dan tidak banyak elemen ketidaktentuan.
  - vi. **Ketepatan**  
Komponen yang terpilih mestilah mempunyai data siri yang bertepatan masa, tepat dan terkini untuk menghasilkan penunjuk yang berguna kepada analisis semasa.



## NOTA KETERANGAN

- 4.2 Data siri masa yang terpilih perlu menjalani ujian pelarasan musim bagi mengeluarkan pengaruh musim terhadap data siri tersebut.
- 4.3 Penyusunan semula Penunjuk Ekonomi Malaysia telah membawa kepada perubahan komponen indeks komposit seperti di bawah:

| Bil. | Komponen  | Status      |
|------|---|-------------|
|      | <b>Indeks Pelopor</b>                                       |             |
| 1    | Penawaran Wang Benar, M1                                    | Dikekalkan  |
| 2    | Indeks Perusahaan Bursa Malaysia                            | Dikekalkan  |
| 3    | Jumlah Dagangan Benar: Lapan Negara Utama                   | Dikeluarkan |
| 4    | IHP Perkhidmatan, Kadar Pertumbuhan (Songsang)              | Dikeluarkan |
| 5    | Indeks Harga Bahan Perindustrian, Kadar Pertumbuhan         | Dikeluarkan |
| 6    | Nisbah Harga terhadap Kos Seunit Buruh, Pembuatan           | Dikeluarkan |
| 7    | Bilangan Unit Kediaman yang Diluluskan Pembinaan            | Dikekalkan  |
| 8    | Bilangan Syarikat Baru Didaftar                             | Dikekalkan  |
| 9    | Import Benar Semi Konduktor                                 | Baru        |
| 10   | Import Benar Logam Asas Berharga dan Logam Bukan Ferus Lain | Baru        |
| 11   | Jangkaan Nilai Jualan, Pembuatan                            | Baru        |

| Bil. | Komponen                           | Status      |
|------|------------------------------------|-------------|
|      | <b>Indeks Serentak</b>             |             |
| 1    | Indeks Pengeluaran Perindustrian   | Dikekalkan  |
| 2    | Import Kasar Benar                 | Dikeluarkan |
| 3    | Gaji & Upah Benar, Pembuatan       | Dikekalkan  |
| 4    | Jumlah Guna Tenaga, Pembuatan      | Dikekalkan  |
| 5    | Nilai Jualan Benar, Pembuatan      | Dikeluarkan |
| 6    | Nilai Caruman Benar, KWSP          | Dikekalkan  |
| 7    | Kapasiti Penggunaan, Pembuatan     | Baru        |
| 8    | Indeks Kuantiti Perdagangan Runcit | Baru        |

| Bil. | Komponen  | Status      |
|------|---|-------------|
|      | <b>Indeks Susulan</b>                           |             |
| 1    | Kadar Faedah Wang Panggilan 7-hari              | Dikeluarkan |
| 2    | Lebih Pinjaman Benar Sektor Swasta              | Dikeluarkan |
| 3    | Bilangan Projek Pelaburan Diluluskan            | Dikekalkan  |
| 4    | Bilangan Majikan Gagal Mencarum KWSP (Songsang) | Dikeluarkan |
| 5    | Bilangan Kenderaan Baru Didaftar                | Dikekalkan  |
| 6    | Kos Seunit Buruh, Pembuatan                     | Baru        |
| 7    | Eksport Gas Asli & Minyak Mentah                | Baru        |
| 8    | IHP Perkhidmatan                                | Baru        |

### 5.0 KONSEP DAN DEFINISI

#### 5.1 Indeks Komposit

Indeks Komposit merupakan gabungan komponen individu yang digunakan untuk mengukur gelagat kitaran ekonomi. Kebaikan Indeks Komposit berbanding analisis komponen individu ialah ianya dapat mengeluarkan pengaruh ketidakstabilan sesuatu komponen. Pada umumnya, Indeks Komposit lebih berupaya menghasilkan isyarat titik pusing yang jelas dan konsisten berbanding penunjuk secara individu. Terdapat tiga jenis Indeks Komposit dalam Penunjuk Ekonomi Malaysia iaitu indeks pelopor, serentak dan susulan.

**i. Indeks Pelopor (IP)**

Indeks Pelopor merupakan ukuran jangkaan keseluruhan aktiviti ekonomi untuk masa hadapan. Indeks ini memberitahu kita ke mana arah tuju ekonomi.

**ii. Indeks Serentak (IS)**

Indeks Serentak merupakan ukuran komprehensif terhadap prestasi keseluruhan ekonomi semasa.

**iii. Indeks Susulan (ISL)**

Indeks Susulan berfungsi sebagai pengesah kepada isyarat Indeks Pelopor dan Indeks Serentak.

#### 5.2 Indeks Difusi

Indeks Difusi adalah pelengkap kepada Indeks Komposit. Ia digunakan untuk membantu membuat keputusan terutamanya dalam penentuan titik pusing kitaran ekonomi.

Nilai 100 bagi Indeks Difusi menunjukkan semua komponen meningkat dan nilai sifar bermaksud semua komponen mengalami penurunan. Sebagai contoh, nilai Indeks Difusi pada 85 mata bagi IP menunjukkan bahawa 85 peratus komponen IP meningkat pada bulan berkenaan.

## NOTA KETERANGAN

### 5.3 Kitaran Perniagaan

Kitaran perniagaan merujuk kepada turun naik aktiviti ekonomi agregat seperti pengeluaran, pendapatan, guna tenaga, perdagangan dan sebagainya. Terdapat 2 fasa utama kitaran perniagaan iaitu fasa pengembangan dan kemelesetan.

Peningkatan dari titik kawah ke puncak ditakrifkan sebagai fasa pengembangan manakala penurunan dari titik puncak ke kawah ditakrifkan sebagai fasa kemelesetan. Fasa kemelesetan kitaran perniagaan ditentukan oleh kejatuhan Indeks Komposit Serentak sekurang-kurangnya enam bulan secara berturut-turut.

Sebagai contoh, Jadual 1 menunjukkan puncak bagi kitaran kelima Indeks Serentak pada Januari 2008 menandakan bermulanya fasa kemelesetan ekonomi dan kawah pada Mac 2009 menandakan berakhirnya fasa kemelesetan atau bermulanya fasa pengembangan ekonomi.

**Jadual 1: Tempoh Rujukan Kitaran Perniagaan Malaysia**

| Bilangan        | Kitaran Rujukan |        |        | Kitaran (bulan) |             |               |
|-----------------|-----------------|--------|--------|-----------------|-------------|---------------|
|                 | Kawah           | Puncak | Kawah  | Pengembangan    | Penguncupan | Kitaran Penuh |
| Kitaran Pertama | -               | Jul-74 | Feb-75 | -               | 7           | -             |
| Kitaran Kedua   | Feb-75          | Jan-85 | Jan-86 | 119             | 12          | 131           |
| Kitaran Ketiga  | Jan-86          | Dis-97 | Nov-98 | 143             | 11          | 154           |
| Kitaran Keempat | Nov-98          | Feb-01 | Feb-02 | 27              | 12          | 39            |
| Kitaran Kelima  | Feb-02          | Jan-08 | Mac-09 | 71              | 14          | 85            |
| <b>Purata</b>   |                 |        |        | <b>90</b>       | <b>11</b>   | <b>101</b>    |

### 5.4 Kitaran Pertumbuhan

Kitaran pertumbuhan ialah turun naik aktiviti ekonomi agregat di sepanjang arah aliran jangka panjangnya. Arah aliran jangka panjang aktiviti ekonomi agregat dianggarkan menggunakan kaedah *Hodrick Prescott Filter* terhadap Indeks Serentak. Kitaran pertumbuhan dihasilkan melalui penyisihan indeks daripada arah aliran jangka panjangnya.

Puncak kitaran pertumbuhan bermaksud berakhirnya fasa kenaikan dan bermulanya fasa penurunan pertumbuhan ekonomi. Sementara kawah bagi kitaran pertumbuhan menunjukkan berakhirnya fasa penurunan atau bermulanya fasa kenaikan pertumbuhan ekonomi.

Sebagai contoh, Jadual 2 menunjukkan titik puncak bagi kitaran kesembilan pada bulan April 2004 menandakan bahawa ekonomi telah memasuki fasa pertumbuhan perlahan dan kawah bagi kitaran pertumbuhan pada November 2005 menunjukkan bermulanya fasa pertumbuhan tinggi.

## NOTA KETERANGAN

**Jadual 2: Tempoh Rujukan Kitaran Pertumbuhan Malaysia**

| Bilangan                  | Kitaran Rujukan |        |        | Kitaran (bulan) |           |               |
|---------------------------|-----------------|--------|--------|-----------------|-----------|---------------|
|                           | Kawah           | Puncak | Kawah  | Menaik          | Menurun   | Kitaran Penuh |
| <b>Kitaran Pertama</b>    | Feb-73          | Mei-74 | Mac-75 | 15              | 10        | 25            |
| <b>Kitaran Kedua</b>      | Mac-75          | Nov-76 | Jul-77 | 20              | 8         | 28            |
| <b>Kitaran Ketiga</b>     | Jul-77          | Jul-81 | Nov-82 | 48              | 16        | 64            |
| <b>Kitaran Keempat</b>    | Nov-82          | Jan-85 | Jan-87 | 26              | 24        | 50            |
| <b>Kitaran Kelima</b>     | Jan-87          | Okt-88 | Apr-90 | 21              | 18        | 39            |
| <b>Kitaran Keenam</b>     | Apr-90          | Jan-92 | Jan-93 | 21              | 12        | 33            |
| <b>Kitaran Ketujuh</b>    | Jan-93          | Jan-98 | Jan-99 | 60              | 12        | 72            |
| <b>Kitaran Kelapan</b>    | Jan-99          | Ogo-00 | Feb-02 | 19              | 18        | 37            |
| <b>Kitaran Kesembilan</b> | Feb-02          | Apr-04 | Nov-05 | 26              | 19        | 45            |
| <b>Kitaran Kesepuluh</b>  | Nov-05          | Jan-08 | Mac-09 | 26              | 14        | 40            |
| <b>Kitaran Kesebelas</b>  | Mac-09          | Mac-11 | -      | 24              | -         | -             |
| <b>Purata</b>             |                 |        |        | <b>28</b>       | <b>15</b> | <b>43</b>     |

### 6.0 KEKANGAN PENUNJUK EKONOMI MALAYSIA

Terdapat beberapa kekangan Penunjuk Ekonomi Malaysia yang perlu diambil perhatian oleh pengguna:

- i. Indeks Pelopor tidak dapat mengukur atau meramal perubahan magnitud dalam aktiviti ekonomi. Indeks ini hanya menunjukkan arah tuju ekonomi di masa hadapan.
- ii. Indeks Serentak tidak menggambarkan tahap situasi ekonomi semasa. Justeru itu, ia tidak boleh ditafsirkan sebagai aras Keluaran Dalam Negeri Kasar (KDNK) semasa bulanan.
- iii. Sistem penunjuk ekonomi tidak berupaya untuk mengambilkira kejutan pengaruh dalaman atau/dan luaran kepada ekonomi.



## EXPLANATORY NOTES

### 1.0 INTRODUCTION

- 1.1 *The publication of Malaysian Economic Indicators presents current economic information with the purpose of monitoring the economic situation of the country. It consists of Leading, Coincident and Lagging for Composite and Diffusion Indexes which published on the monthly basis.*
- 1.2 *Since this is a recompiling publication of Malaysian Economic Indicators, the past series were also revised using the new series of components.*

### 2.0 OBJECTIVES

*The main objectives of Malaysian Economic Indicators are to monitor Malaysian economic performance on a monthly basis and to assist the policy makers, investors, researchers as well as the public to assess the economic performance.*

### 3.0 SOURCES OF DATA

*Data for the compilation of Composite and Diffusion Indexes is obtained from the Department of Statistics Malaysia and the following agencies:*

- i. *Ministry of Housing and Local Government (MHLG);*
- ii. *Bank Negara Malaysia (BNM);*
- iii. *Road Transport Department (RTD);*
- iv. *Malaysian Industrial Development Authority (MIDA) and*
- v. *Employees Provident Fund (EPF).*

### 4.0 METHODOLOGY

- 4.1 *Selection of each component for the Composite Index is based on the guideline in the Business Cycle Indicators Handbook<sup>1</sup> namely:*
  - i. **Conformity to business cycle**  
*The selected data series must conform to the business cycle.*
  - ii. **Consistent timing**  
*The data series must exhibit a consistent timing pattern over time as leading, coincident or lagging indexes.*
  - iii. **Economic significance**  
*The selected data series must significantly contribute to the economy.*
  - iv. **Statistical adequacy**  
*Data must be collected and processed in a statistically reliable manner.*
  - v. **Smoothness**  
*The month to month movements of the data series must not be too erratic.*
  - vi. **Promptness**  
*The selected components must be timely, accurate and updated to contribute to the current analysis.*

## EXPLANATORY NOTES

4.2 *The selected time series data are seasonally adjusted to remove the seasonal influences of the data series.*

4.3 *The recompilation of Malaysian Economic Indicators has resulted to the change of the composite index components as shown below:*

| No. | Components   | Remarks    |
|-----|--|------------|
|     | <b>Leading Index</b>   |            |
| 1   | Real Money Supply, M1  | Maintained |
| 2   | Bursa Malaysia Industrial Index                                  | Maintained |
| 3   | Real Total Trade: Eight Major Trading Partners                   | Excluded   |
| 4   | CPI for Services, Growth Rate (Inverted)                         | Excluded   |
| 5   | Industrial Material Price Index, Growth Rate                     | Excluded   |
| 6   | Ratio of Price to Unit Labour Cost, Manufacturing                | Excluded   |
| 7   | Number of Housing Units Approved                                 | Maintained |
| 8   | Number of New Companies Registered                               | Maintained |
| 9   | Real Imports of Semi Conductors                                  | New        |
| 10  | Real Imports of Other Basic Precious and Other Non-ferrous Metal | New        |
| 11  | Expected Sales Value, Manufacturing                              | New        |

| No. | Components                           | Remarks    |
|-----|--------------------------------------|------------|
|     | <b>Coincident Index</b>              |            |
| 1   | Industrial Production Index          | Maintained |
| 2   | Real Gross Imports                   | Excluded   |
| 3   | Real Salaries & Wages, Manufacturing | Maintained |
| 4   | Total Employment, Manufacturing      | Maintained |
| 5   | Real Sales, Manufacturing            | Excluded   |
| 6   | Real Contributions, EPF              | Maintained |
| 7   | Capacity Utilisation, Manufacturing  | New        |
| 8   | Volume Index of Retail Trade         | New        |

| No. | Components                             | Remarks    |
|-----|--|------------|
|     | <b>Lagging Index</b>                   |            |
| 1   | 7-day Call Money, Rate                 | Excluded   |
| 2   | Real Excess Lending to Private Sector  | Excluded   |
| 3   | Number of Investment Projects Approved | Maintained |
| 4   | Number of Defaulters, EPF (Inverted)   | Excluded   |
| 5   | Number of New Vehicles Registered      | Maintained |
| 6   | Unit Labour Cost, Manufacturing        | New        |
| 7   | Exports of Natural Gas & Crude Oil     | New        |
| 8   | CPI for Services                       | New        |

### 5.0 CONCEPTS AND DEFINITIONS

#### 5.1 Composite Index

*The Composite Index is the combination of individual indicators which measures the economic cycles behaviour. The advantage of Composite Index compared to individual analysis is the tendency to smooth out some of the volatility of the series. The Composite Index is generally more reliable in generating clear and consistent turning points than individual indicators. There are three types of Composite Index in the Malaysian Economic Indicators, i.e. leading, coincident and lagging indexes.*

**i. Leading Index (LI)**

*The Leading Index measures anticipations of the overall economic activity in the months ahead. The index tells us where the economy is going.*

**ii. Coincident Index (CI)**

*The Coincident Index is a comprehensive measure of the overall current economic performance.*

**iii. Lagging Index (LG)**

*The Lagging Index is to validate the signal of the Leading and Coincident Indexes.*

#### 5.2 Diffusion Index

*The Diffusion Index is a complement to the Composite Index. It is used to assist in making a decision especially in determining turning point of economic cycle.*

*The value of 100 for Diffusion Index implies that all components are increasing and the value of zero shows that all components are decreasing. For example, the Diffusion Index of 85 points for the LI shows that 85 per cent of LI components are increasing for that particular month.*

## EXPLANATORY NOTES

### 5.3 Business Cycle

Business cycle is a fluctuation of the aggregated economic activity such as production, income, employment, trade and etc. There are two main phases of business cycle namely expansion and recession phases.

The upward movement from trough to peak is defined as expansion phase meanwhile the downward movement from peak to trough is classified as recession phase. The phase of business cycle recession is determined by declining of the Coincident Composite Index for at least six months successively.

For example, Table 1 shows that the peak of the fifth cycle of Coincident Index in January 2008 indicates the beginning of business cycle recession and the trough in March 2009 indicates the end of recession phase or the beginning of economic expansion phase.

**Table 1: Malaysian Business Cycles Reference Periods**

| Number              | Reference Cycles |        |        | Cycles (month) |             |            |
|---------------------|------------------|--------|--------|----------------|-------------|------------|
|                     | Trough           | Peak   | Trough | Expansion      | Contraction | Full Cycle |
| <b>First Cycle</b>  | -                | Jul-74 | Feb-75 | -              | 7           | -          |
| <b>Second Cycle</b> | Feb-75           | Jan-85 | Jan-86 | 119            | 12          | 131        |
| <b>Third Cycle</b>  | Jan-86           | Dec-97 | Nov-98 | 143            | 11          | 154        |
| <b>Fourth Cycle</b> | Nov-98           | Feb-01 | Feb-02 | 27             | 12          | 39         |
| <b>Fifth Cycle</b>  | Feb-02           | Jan-08 | Mar-09 | 71             | 14          | 85         |
| <b>Average</b>      |                  |        |        | <b>90</b>      | <b>11</b>   | <b>101</b> |

### 5.4 Growth Cycle

The growth cycle is a fluctuation of the aggregated economic activity along its long term trend. The long term trend of the aggregated economic activity is estimated using the Hodrick Prescott Filter method on the Coincident Index. The growth cycle is generated through the deviation of the index from its long term trend.

The peak of growth cycle reflects the end of the upswing and the beginning of downswing phase of economic growth. Meanwhile trough for growth cycle indicates the end of downswing or the beginning of upswing phase of economic growth.

For example, Table 2 shows that the peak point of the ninth cycle in April 2004 reflects that economy is entering the slow growth phase and the trough for growth cycle in November 2005 shows the beginning of a higher growth phase.



## EXPLANATORY NOTES

**Table 2: Malaysian Growth Cycles Reference Periods**

| Number                | Reference Cycles |        |        | Cycles (month) |           |            |
|-----------------------|------------------|--------|--------|----------------|-----------|------------|
|                       | Trough           | Peak   | Trough | Upswing        | Downswing | Full Cycle |
| <b>First Cycle</b>    | Feb-73           | May-74 | Mar-75 | 15             | 10        | 25         |
| <b>Second Cycle</b>   | Mar-75           | Nov-76 | Jul-77 | 20             | 8         | 28         |
| <b>Third Cycle</b>    | Jul-77           | Jul-81 | Nov-82 | 48             | 16        | 64         |
| <b>Fourth Cycle</b>   | Nov-82           | Jan-85 | Jan-87 | 26             | 24        | 50         |
| <b>Fifth Cycle</b>    | Jan-87           | Oct-88 | Apr-90 | 21             | 18        | 39         |
| <b>Sixth Cycle</b>    | Apr-90           | Jan-92 | Jan-93 | 21             | 12        | 33         |
| <b>Seventh Cycle</b>  | Jan-93           | Jan-98 | Jan-99 | 60             | 12        | 72         |
| <b>Eighth Cycle</b>   | Jan-99           | Aug-00 | Feb-02 | 19             | 18        | 37         |
| <b>Nineth Cycle</b>   | Feb-02           | Apr-04 | Nov-05 | 26             | 19        | 45         |
| <b>Tenth Cycle</b>    | Nov-05           | Jan-08 | Mar-09 | 26             | 14        | 40         |
| <b>Eleventh Cycle</b> | Mar-09           | Mar-11 | -      | 24             | -         | -          |
| <b>Average</b>        |                  |        |        | <b>28</b>      | <b>15</b> | <b>43</b>  |

### 6.0 LIMITATION OF MALAYSIAN ECONOMIC INDICATORS

There are some limitations of the Malaysian Economic Indicators that users should be aware of:

- i. The Leading Index is unable to measure or predict the magnitude of any changes of economic activity. The index shows the direction of the economy in advance.
- ii. The Coincident Index does not represent the level of the current economic situation. Thus it should not be interpreted as the level of current monthly Gross Domestic Product (GDP).
- iii. The economic indicators unable to take into account the internal or/and external shock to the economy.

**JADUAL TARIKH PENGELUARAN PENERBITAN  
PENUNJUK EKONOMI MALAYSIA  
INDEKS PELOPOR, SERENTAK & SUSULAN, 2012**

*SCHEDULE OF RELEASE DATES FOR PUBLICATION OF  
MALAYSIAN ECONOMIC INDICATORS  
LEADING, COINCIDENT & LAGGING INDEXES, 2012*

| <b>Bulan Rujukan</b><br><i>Reference Month</i> | <b>Tarikh Penerbitan</b><br><i>Publication Date</i>          |
|--|--|
| <b>Januari</b><br><i>January</i>               | <b>TLD 23 Mac 2012</b><br><i>NLT 23 March 2012</i>           |
| <b>Februari</b><br><i>February</i>             | <b>TLD 24 April 2012</b><br><i>NLT 24 April 2012</i>         |
| <b>Mac</b><br><i>March</i>                     | <b>TLD 24 Mei 2012</b><br><i>NLT 24 May 2012</i>             |
| <b>April</b><br><i>April</i>                   | <b>TLD 22 Jun 2012</b><br><i>NLT 22 June 2012</i>            |
| <b>Mei</b><br><i>May</i>                       | <b>TLD 23 Julai 2012</b><br><i>NLT 23 July 2012</i>          |
| <b>Jun</b><br><i>June</i>                      | <b>TLD 24 Ogos 2012</b><br><i>NLT 24 August 2012</i>         |
| <b>Julai</b><br><i>July</i>                    | <b>TLD 21 September 2012</b><br><i>NLT 21 September 2012</i> |
| <b>Ogos</b><br><i>August</i>                   | <b>TLD 25 Oktober 2012</b><br><i>NLT 25 October 2012</i>     |
| <b>September</b><br><i>September</i>           | <b>TLD 23 November 2012</b><br><i>NLT 23 November 2012</i>   |
| <b>Oktober</b><br><i>October</i>               | <b>TLD 21 Disember 2012</b><br><i>NLT 21 December 2012</i>   |
| <b>November</b><br><i>November</i>             | <b>TLD 24 Januari 2013</b><br><i>NLT 24 January 2013</i>     |
| <b>Disember</b><br><i>December</i>             | <b>TLD 22 Februari 2013</b><br><i>NLT 22 February 2013</i>   |

**Nota : TLD Tidak lewat daripada**  
*Note : NLT Not later than*